



# Sonoma Water

Clean. Reliable. Essential. Every Day.

## Flood Zone 1A

SONOMA WATER: STREAM MAINTENANCE  
PROGRAM UPDATE 2024



# Vegetation Management

- Bellevue Wilfred
- Brush Creek
- Brush Creek Reservoir
- Coleman Creek
- Colgan Creek
- College Creek
- Copeland Creek
- Cotati Creek
- Crane Creek
- Ducker Creek
- Faught Creek
- Five Creek
- Gossage Creek
- Hinebaugh Creek
- Hunter Creek
- Laguna de Santa Rosa
- Middle fork Brush Creek
- Oakmont Creek
- Olivet Creek
- Paulin Creek
- Peterson Creek
- Piner Creek
- Russell Creek
- Santa Rosa Creek
- Santa Rosa Creek Diversion
- Spring Creek
- Santa Rosa Creek Reservoir (Spring Lake)
- Starr Creek
- Todd Creek
- Wilfred Creek
- Windsor Creek
- ***Total 2,733 Cubic Yards of Material***



# Colgan Creek: Stony Point Rd to Bellevue Ave



# Copeland Creek Commerce Blvd to Seed Farm Dr



# Todd Creek

## S Moorland Ave to Scenic Ave



# Debris and Trash Removal



---

Security Guard Patrolling  
Channels

---

Weekly Clean ups

---

---

Daily coordination with City of  
Santa Rosa and Rohnert  
Park

---

84,640 lbs of Trash Removed

---



# Sediment Removal

- Oakmont Creek
  - 224 Cy
- Copeland Creek
  - 960 Cy
- Santa Rosa Creek Diversion
  - 496 Cy
- Todd Creek
  - 472 Cy
- Wilfred Creek
  - 192 Cy
- Santa Rosa Creek Reservoir
  - 1,280 Cy
- Brush Creek Reservoir
  - Bank Repair
- Santa Rosa Creek
  - 5,376 Cy

# Oakmont Creek





# Todd Creek



# Brush Creek Reservoir



# Santa Rosa Creek



# Upcoming Projects

- Todd Creek
  - Failed Concrete Walls
  - 400k in FY 24/25 for Design
  - 1.65 million in FY 25/26 for Construction

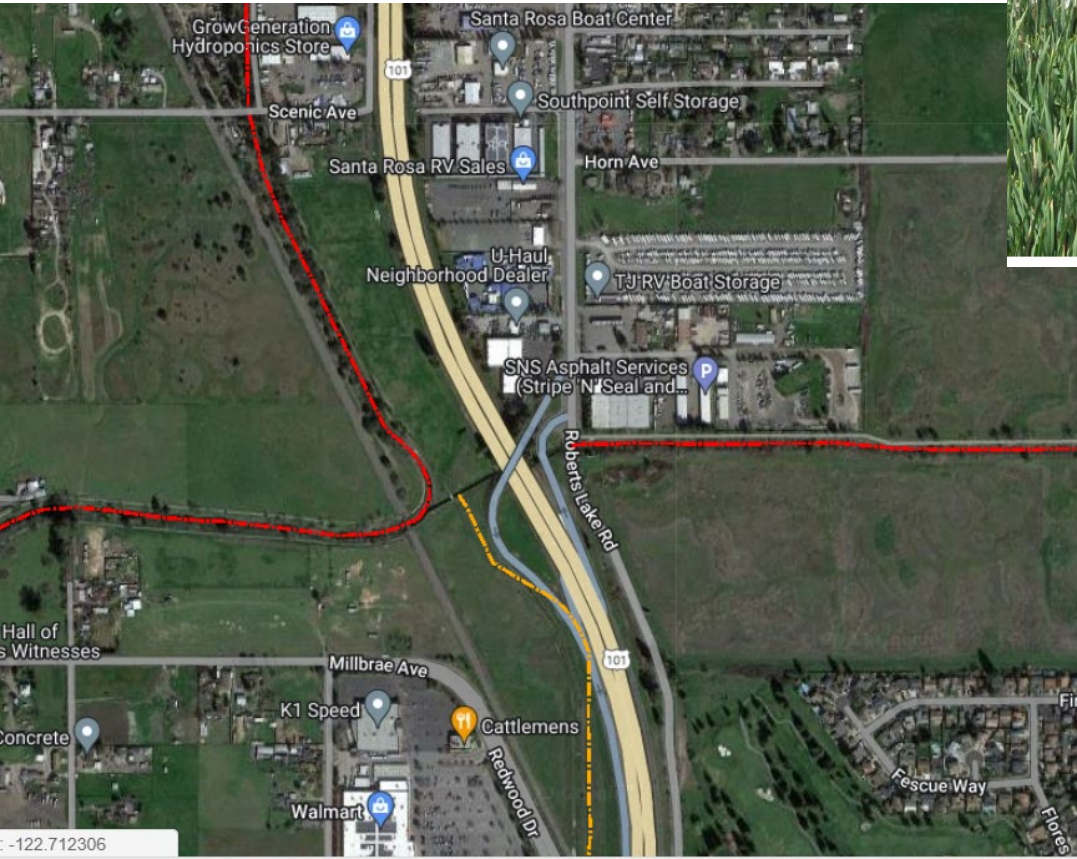
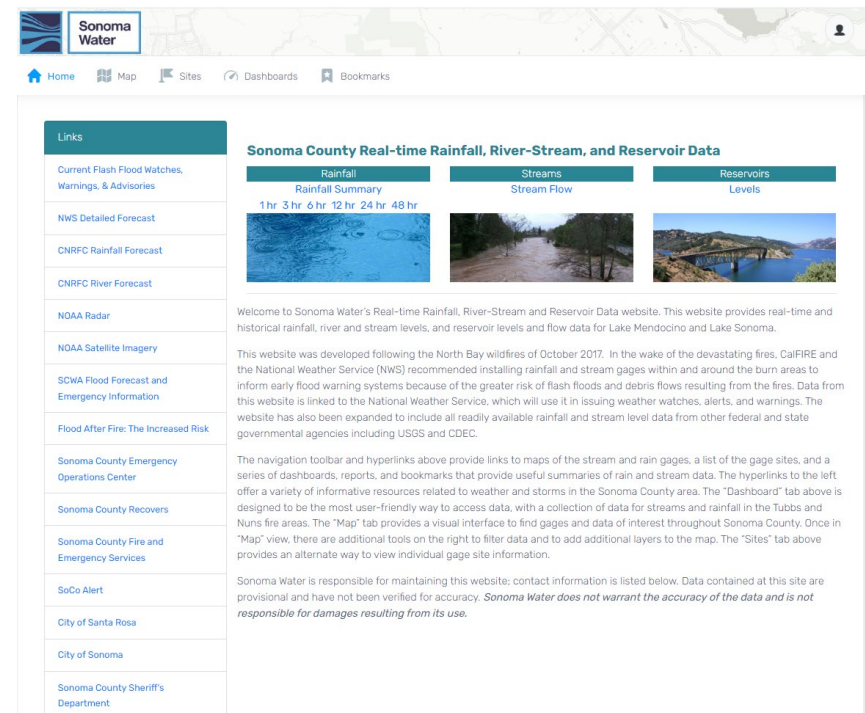


PHOTO 2: Wall 1 Failed Concrete Panel



# Sonoma OneRain System

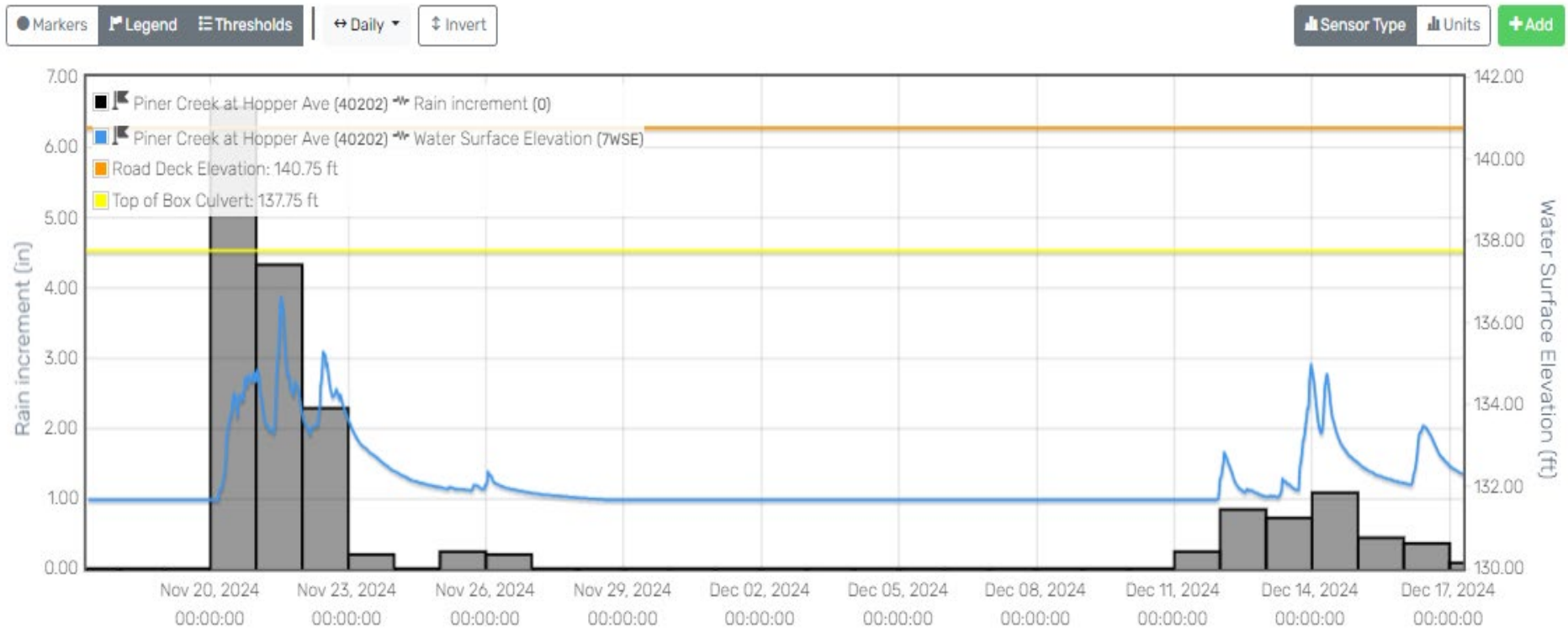
- OneRain
  - Sonoma.onerain.com
  - Real time rainfall, river-stream and reservoir data



The screenshot displays the Sonoma Water OneRain System website. The header includes the Sonoma Water logo and navigation links for Home, Map, Sites, Dashboards, and Bookmarks. A left sidebar titled "Links" contains a list of resources such as "Current Flash Flood Watches, Warnings, & Advisories", "NWS Detailed Forecast", "CNRFC Rainfall Forecast", "CNRFC River Forecast", "NOAA Radar", "NOAA Satellite Imagery", "SCWA Flood Forecast and Emergency Information", "Flood After Fire: The Increased Risk", "Sonoma County Emergency Operations Center", "Sonoma County Recovers", "Sonoma County Fire and Emergency Services", "SoCo Alert", "City of Santa Rosa", "City of Sonoma", and "Sonoma County Sheriff's Department". The main content area is titled "Sonoma County Real-time Rainfall, River-Stream, and Reservoir Data" and features three columns: "Rainfall" (with a "Rainfall Summary" and time filters for 1 hr, 3 hr, 6 hr, 12 hr, 24 hr, and 48 hr), "Streams" (with a "Stream Flow" image), and "Reservoirs" (with a "Reservoirs Levels" image). Below these columns, there is a welcome message and a disclaimer: "Sonoma Water is responsible for maintaining this website; contact information is listed below. Data contained at this site are provisional and have not been verified for accuracy. Sonoma Water does not warrant the accuracy of the data and is not responsible for damages resulting from its use."

# Sonoma OneRain System

17 November, 2024 - 17 December, 2024



# Questions?



Sonoma  
Water